

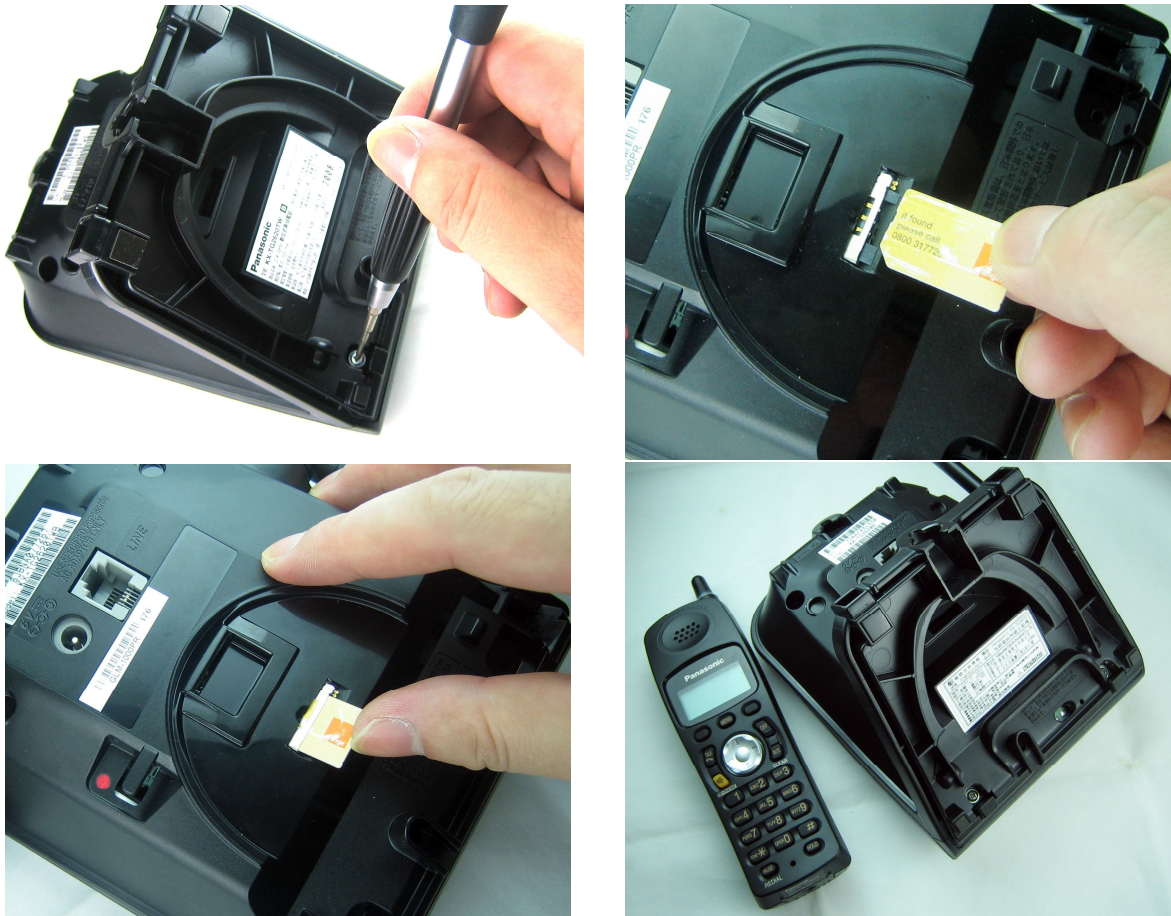
GSM Local Phone Monitoring Phone Type

OTP-GSM101PR

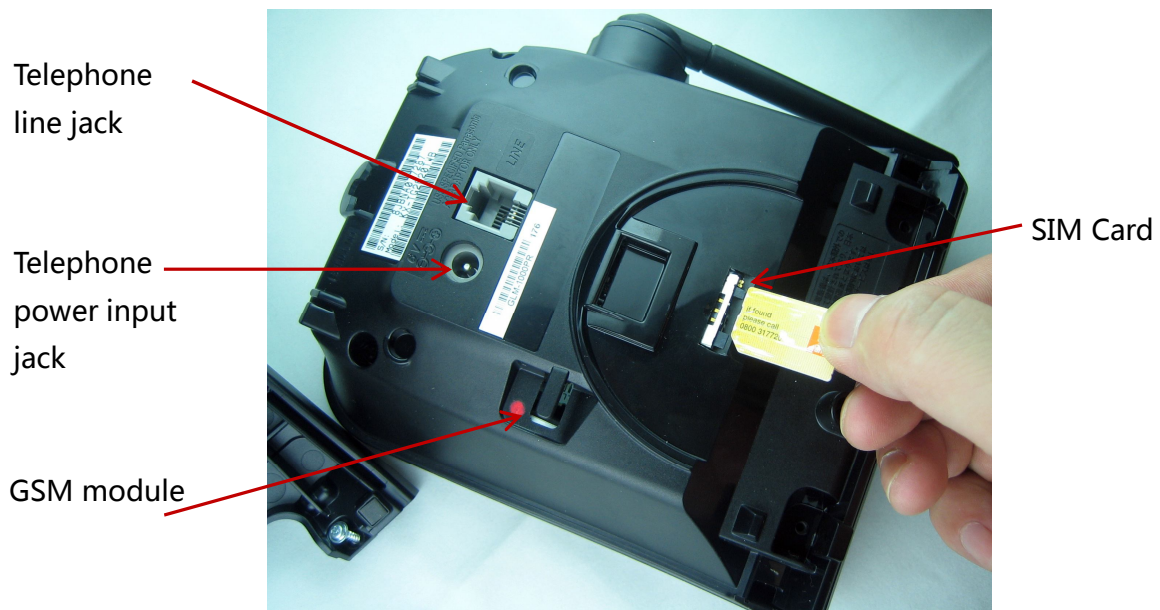


Quick start :

Step: 1. Insert SIM card (SIM card must without any password)



Step: 2. Turn power on, device began to work.



Step: 3. Set calling number for device by using SMS

Code+01+Phone number for first number

Example : the code is 968 , the phone number will be set is 0912345678

Send SMS: 968010912345678 to device SIM card

Will return "0912345678" →1 OK

SMS commands

Function	active	deactivate
Setting first alert number	01	
Setting second alert number	02	
Setting third alert number	03	
Voice active function	041	040
infrared sensor function	051	050
Phone line active funtion	061	060
shock active function	071	070
all detect mode on/off	11	10

All SMS function is using numeric number. **3 code number + function code**

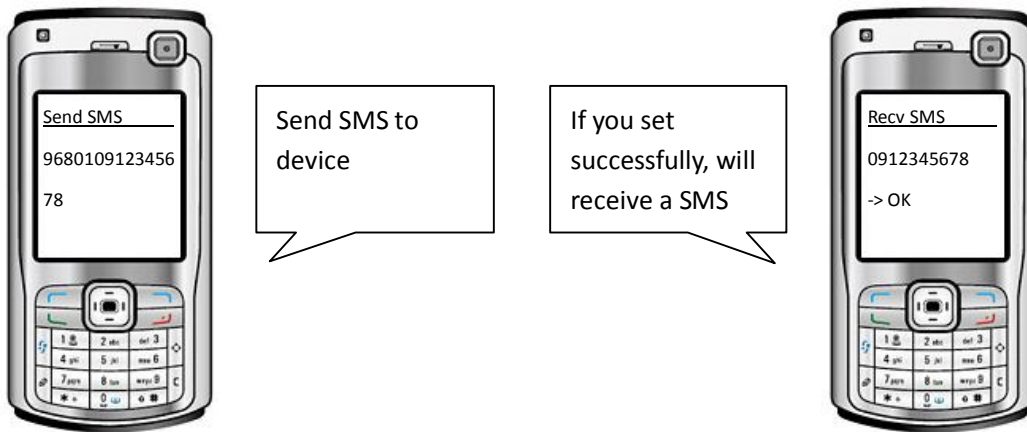
Example: the code is **968**

1. Function 01 is phone book saving number for first call back number memory.

SMS will be send:

xxx01(saving phone number) example saving phone number is **0912345678**

968010912345678 return SMS is "0912345678" →1 OK



2. Function 02 is phone book saving number for second SMS send back number memory.

SMS will be send:

xxx02 (saving phone number) example saving phone number is **0933513368**

968020933513368 return SMS is "0933513368" →2 OK

3. Function 03 is phone book saving number for third SMS send back number memory.

SMS will be send:

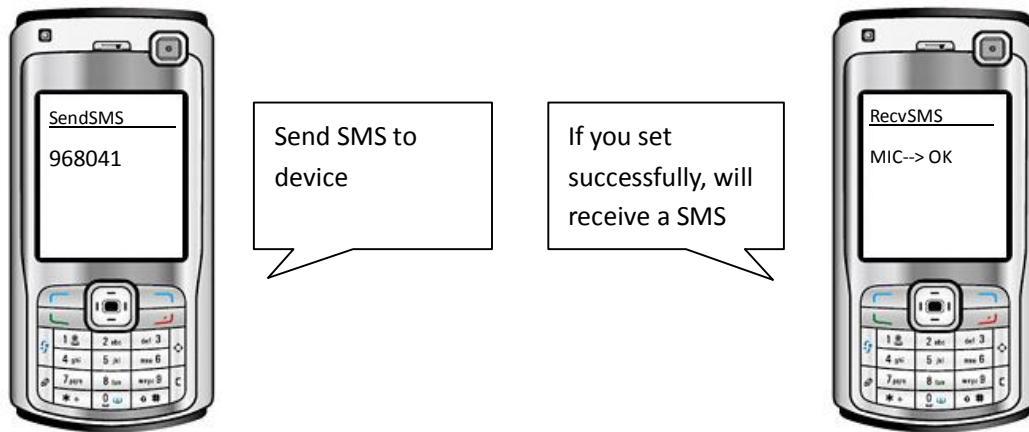
xxx03(saving phone number) example saving phone number is **0925168166**

968030925168166 return SMS is "0925168166" →3 OK

4. Function 04 is voice mode active on/off switch.

xxx040 switch off voice active alarm mode ---- return SMS (MIC→ OFF)

xxx041 switch on voice active alarm mode---- return SMS (MIC→ ON)



5. Function 05 is IR (external alarm) mode active on/off switch.

xxx050 switch off IR or external active alarm mode ---- return SMS (IR→ OFF)

xxx051 switch on IR or external alarm mode---- return SMS (IR→ ON)

6. Function 06 is Phone line active mode on/off switch.

xxx060 switch off Phone line active alarm mode ---- return SMS (PHONE-LINE→ OFF)

xxx061 switch on Phone line active alarm mode---- return SMS (PHONE-LINE→ ON)

7. Function 07 is internal shock active mode on/off switch.

xxx070 switch off shock detect active alarm mode ---- return SMS (SHOCK→ OFF)

xxx071 switch on shock detect active alarm mode---- return SMS (SHOCK→ ON)

8. Function 10 is switch all detect mode on/off switch. (voice, IR, phone line, shock)

xxx10 switch off all detect alarm mode ---- return SMS (ALL→ OFF)

xxx11 switch on all detect alarm mode---- return SMS (ALL→ ON)

Response "ERROR" means CODE error or Function code error